

The logo for Evoke Pharma features the word "EVOKE" in a large, bold, blue sans-serif font. Below it, the word "PHARMA" is written in a smaller, bold, dark grey sans-serif font. The letters are spaced out. Behind the text, there are several concentric, curved lines in shades of blue and grey, creating a sense of motion or a stylized 'E' shape. The entire logo is set against a white background.

**EVOKE**  
**P H A R M A**

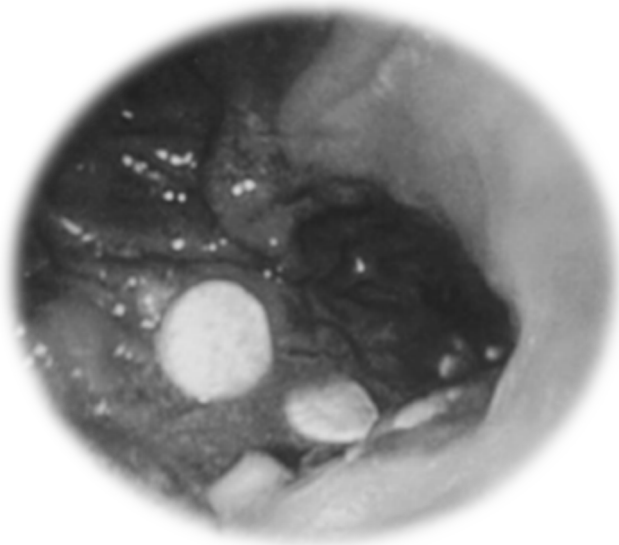
NASDAQ: EVOK  
March 2020

Evoke cautions you that statements included in this presentation that are not a description of historical facts are forward-looking statements. In some cases, you can identify forward-looking statements by terms such as “may,” “will,” “should,” “expect,” “plan,” “anticipate,” “could,” “intend,” “target,” “project,” “contemplates,” “believes,” “estimates,” “predicts,” “potential” or “continue” or the negatives of these terms or other similar expressions. These statements are based on the company’s current beliefs and expectations. These forward-looking statements include statements regarding: the potential timing of FDA action on the NDA and potential approval and product launch for Gimoti; Evoke’s belief that it can leverage Eversana’s capabilities to enable a rapid and efficient launch and continued commercialization of Gimoti; the commercial opportunity for Gimoti, including expected pricing and reimbursement coverage; and expected intellectual property protection for Gimoti and Evoke’s projected cash runway. The inclusion of forward-looking statements should not be regarded as a representation by Evoke that any of its plans will be achieved. Actual results may differ from those set forth in this press release due to the risks and uncertainties inherent in Evoke’s business, including, without limitation: the potential for the FDA to delay the PDUFA target goal date due to the FDA’s internal resource constraints or other reasons, including as a result of the COVID-19 coronavirus outbreak; Evoke may be unable to timely and successfully address the deficiencies raised in the Complete Response Letter (CRL) regarding Gimoti, including as a result of adverse findings from a root cause analysis or data from the newly manufactured product batches not fully addressing issues raised by the FDA in the CRL and Type A meeting; FDA may not agree with Evoke’s conclusion of the results from the manufacturing testing or the root cause analysis, or may require Evoke to conduct additional studies; the outbreak of the COVID-19 may disrupt Evoke’s business and that of the third parties on which it depends, including delaying manufacturing, impairing employee productivity and Eversana’s commercial preparation activities, delaying FDA’s PDUFA date and potential commercialization, and impairing global economic activity, including the ability to raise capital, all of which could materially and adversely affect Evoke’s results of operations and financial conditions; Evoke’s dependence on third parties for the manufacture of Gimoti and analysis of the manufacturing data; Evoke’s depending on EVERSANA to prepare for commercialization and launch commercial sales of Gimoti, if approved; Evoke will require substantial additional funding to continue its operations, and may be unable to raise capital or obtain funds when needed, including to fund ongoing operations; Evoke may not be able to obtain, maintain and enforce its patents and other intellectual property rights, and it may be prohibitively difficult or costly to protect such rights; and other risks detailed in Evoke’s periodic reports it files with the Securities and Exchange Commission. You are cautioned not to place undue reliance on these forward-looking statements, which speak only as of the date hereof, and Evoke undertakes no obligation to revise or update this presentation to reflect events or circumstances after the date hereof. All forward-looking statements are qualified in their entirety by this cautionary statement. This caution is made under the safe harbor provisions of the Private Securities Litigation Reform Act of 1995.

<b>Product</b>	<ul style="list-style-type: none"><li>• Gimoti™: a novel nasal spray delivery of metoclopramide</li><li>• Relief of symptoms in adult women with acute and recurrent diabetic gastroparesis</li></ul>
<b>Large, Growing &amp; Unsatisfied Market</b>	<ul style="list-style-type: none"><li>• 12-16M patients in US, 80% female, poorly served with limited efficacy from current standard of care</li><li>• Only 1 FDA-approved product: metoclopramide (oral &amp; injection)</li><li>• ~4M prescriptions annually for oral metoclopramide</li></ul>
<b>Differentiation versus Oral Medications</b>	<ul style="list-style-type: none"><li>• Bypasses the GI tract and enters the bloodstream directly</li><li>• Predictable absorption despite delayed and erratic stomach emptying</li><li>• Absorption not affected by vomiting</li><li>• Sex-based PK differences for Gimoti</li></ul>
<b>Compelling Commercial Opportunity</b>	<ul style="list-style-type: none"><li>• Product launch through agreement with EVERSANA provides integrated commercial team and non-dilutive financing</li><li>• Only 1 other out-patient treatment approved by FDA</li><li>• Limited competitive products in development showing limited efficacy to date</li></ul>
<b>Regulatory Pathway</b>	<ul style="list-style-type: none"><li>• Type A FDA meeting held in July 2019 to receive FDA feedback on planned resubmission</li><li>• Resubmission of Gimoti NDA accepted for filing in January 2020</li><li>• Gimoti NDA PDUFA target date set for June 19, 2020</li></ul>

## Unpredictable symptom flares can lead to costly hospitalizations

Undissolved drug tablets in stomach



Simpson, S.E., Clinical Toxicology, 2011

- Delayed emptying of stomach contents to small intestine (in the absence of an obstruction) interferes with oral absorption
- Vomiting further complicates effectiveness of oral medications
- Signs and symptoms characteristic of flare:

Nausea

Abdominal Pain

Early Satiety

Bloating

Prolonged Fullness

Vomiting

### Impact on patients:

Diminished Quality of Life • Malnourishment • Poor Diabetes Control • Hospitalizations (Avg. 6+ days\*)

\* Wang, YM. Am J of Gastroenterol 2008; 103:313-322



**12 – 16 million patients with  
symptoms of gastroparesis and one  
FDA approved drug**

- **80% of diabetic gastroparesis patients are women**
  - Diabetes is #1 known cause of gastroparesis
  - ~2-3M patients currently receive treatment
  - Under-diagnosed in part due to lack of awareness
  - Prevalence increasing due to growing diabetes population
- **Estimated \$3-4B prescription market**
- **\$3.5B in additional hospitalization costs in 2004**

- Wang, Parkman. "Gastroparesis Related Hospitalizations in the United States: Trends, Characteristics and Outcomes 1995-2004" *AM J Gastroenterol* 2008; 103:313-322
- Samsom M, Roelofs J. "Prevalence of Delayed Gastric Emptying in Diabetic Patients and Relationship to Dyspeptic Symptoms." *Diabetes Care*, Vol. 26, No. 11, Nov. 2003, 3116-3122
- Hasler WL. *Current Gastro Reports* 2007; 9: 261-269
- Intagliato NI, Koch KL. *Current Gastro Reports*
- Soykan I, Sivri B, Sarosiek I, Kiernan B, McCallum RW. Demography, clinical characteristics, psychological and abuse profiles, treatment, and long-term follow-up of patients with gastroparesis. *Dig Dis Sci* 1998;43:2398-404

## Current oral treatment options lack predictable delivery and absorption, leading to inadequate treatment

- **Motility & Symptoms**
  - Oral Metoclopramide (1<sup>st</sup> line)
  - Domperidone (not FDA-approved)
- **Motility**
  - Erythromycin (used off-label)
- **Symptoms**
  - Ondansetron, promethazine (nausea & vomiting)
  - PPI's (abdominal pain)
  - Narcotics (abdominal pain)



## Ineffective Treatments and Inadequate Response

- Erratic absorption of oral drugs\* (significant delay, multi-dose dumping) or no absorption due to vomiting
- Unpredictable efficacy and potential safety concerns
- Lack of compliance due to nausea and other GI symptoms

\* Gastroparesis: Clinical Evaluation of Drugs for Treatment FDA Guidance for Industry. July 2015



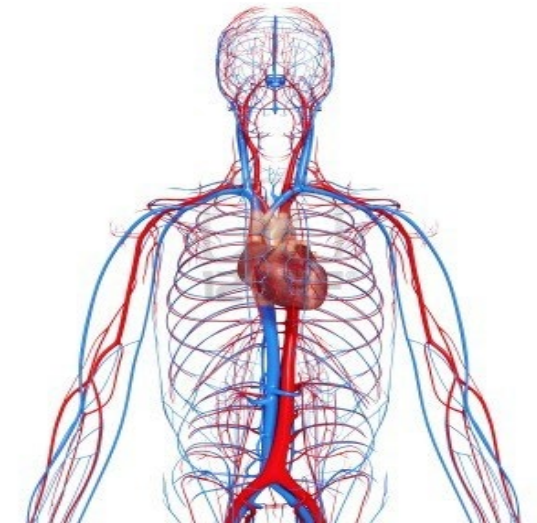
## Novel approach for symptomatic relief of acute & recurrent diabetic gastroparesis in women

Spray delivered and absorbed in the nasal cavity



Designed to provide:

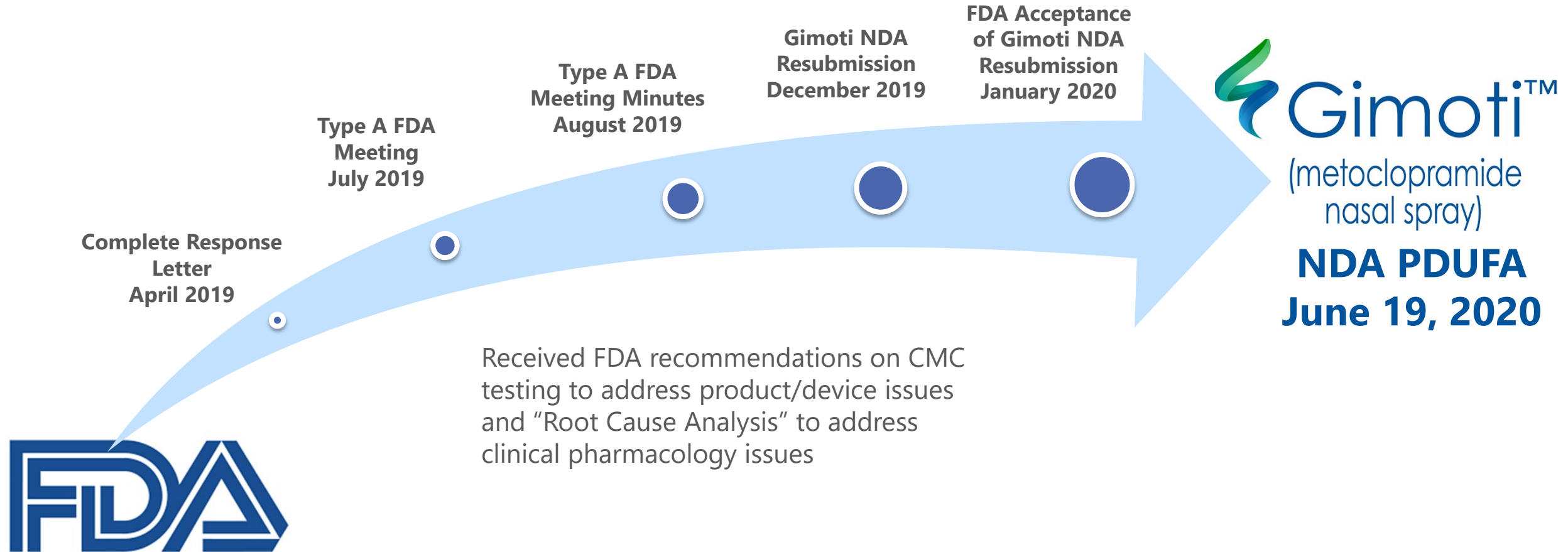
- Predictable absorption regardless of gastric emptying delays
- Symptom relief even during flares



Unlike oral medications, nasal delivery:

- Bypasses the GI tract to directly enter the bloodstream
- Ensures predictable absorption despite vomiting and gastric emptying delays

 **Gimoti™**  
(metoclopramide  
nasal spray)





- FDA provided recommendations to address remaining approvability issues
  - Clinical pharmacology
    - Specific to low  $C_{\max}$  in 4.6% (14/308) of the total administered Gimoti doses in the pivotal pharmacokinetic (PK) study
      - FDA stated the overall lower mean  $C_{\max}$  was driven by the data from these few subjects
      - Without these aberrant doses, Company's analysis shows data met the bioequivalence criteria for both men and women
    - FDA recommended a root cause analysis to determine the origin of the PK variability and mitigation strategies to address the issue(s)
  - Product quality/device quality
    - FDA requested data from previously planned registration batches of commercial product to be manufactured
    - Data may provide additional support for the proposed acceptance criteria for droplet size distribution and actuation force
- The Agency did not request any new clinical data and did not raise any safety concerns

- Focused on topics noted in the CRL
  - Root cause analysis of low drug exposure in the comparative bioavailability study
  - Additional product quality/device quality control testing
- Based on FDA feedback and meeting minutes Evoke submitted:
  - Root cause analysis and previously collected patient use and experience information
  - An analysis of pump performance characteristics of the nasal spray devices used in the comparative bioavailability study
  - 3-month stability data from commercial scale batches of Gimoti
  - FDA did not request additional human clinical trials be completed for resubmission
- Gimoti NDA Resubmission
  - Accepted January 2020
  - PDUFA date set for June 19, 2020

# Compelling Commercial Opportunity

## Significant Unmet Need

- Physicians and patients report broad interest in non-oral treatment alternatives to address unpredictable absorption
- No new FDA approved therapies for gastroparesis since 1980

## Ready-made Market

- ~4M prescriptions of oral metoclopramide annually
- 20-50% of patients use off-label treatments or go untreated

## Potential for Premium Pricing

- 30 national and regional plans indicate limited reimbursement impediments based upon various pricing scenarios

## Appropriate for Specialty Salesforce

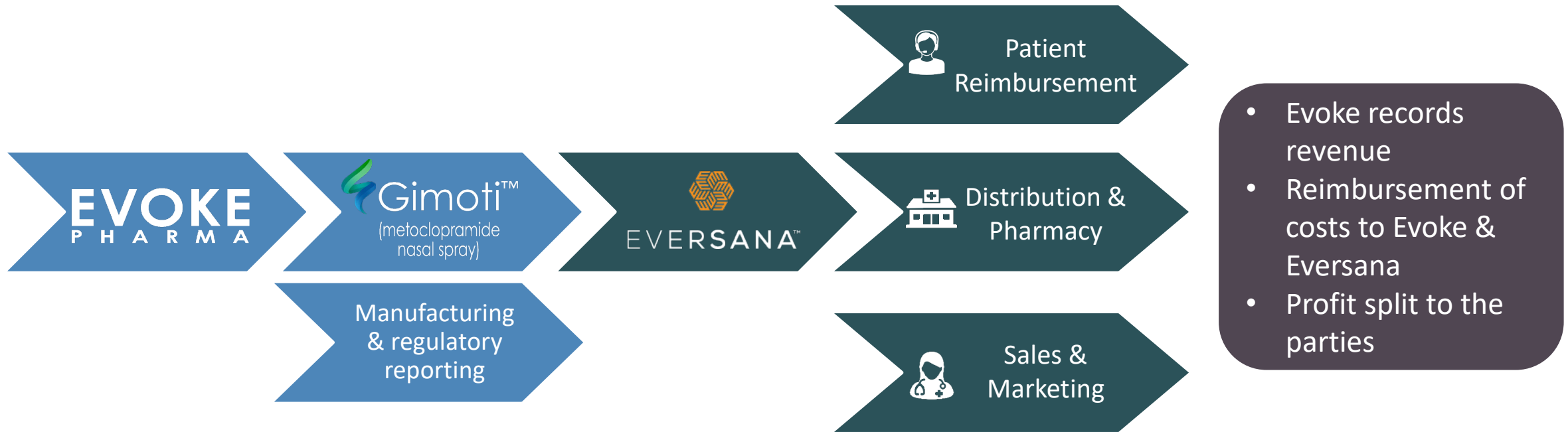
- ~7,200 metoclopramide prescribing gastroenterologists allows for small, targeted salesforce
- Significant referrals for diagnosis/treatment from specialists

## Rapid Uptake Possible

- No expected competitive sales force for several years after launch
- Market research shows rapid incorporation into treatment regime

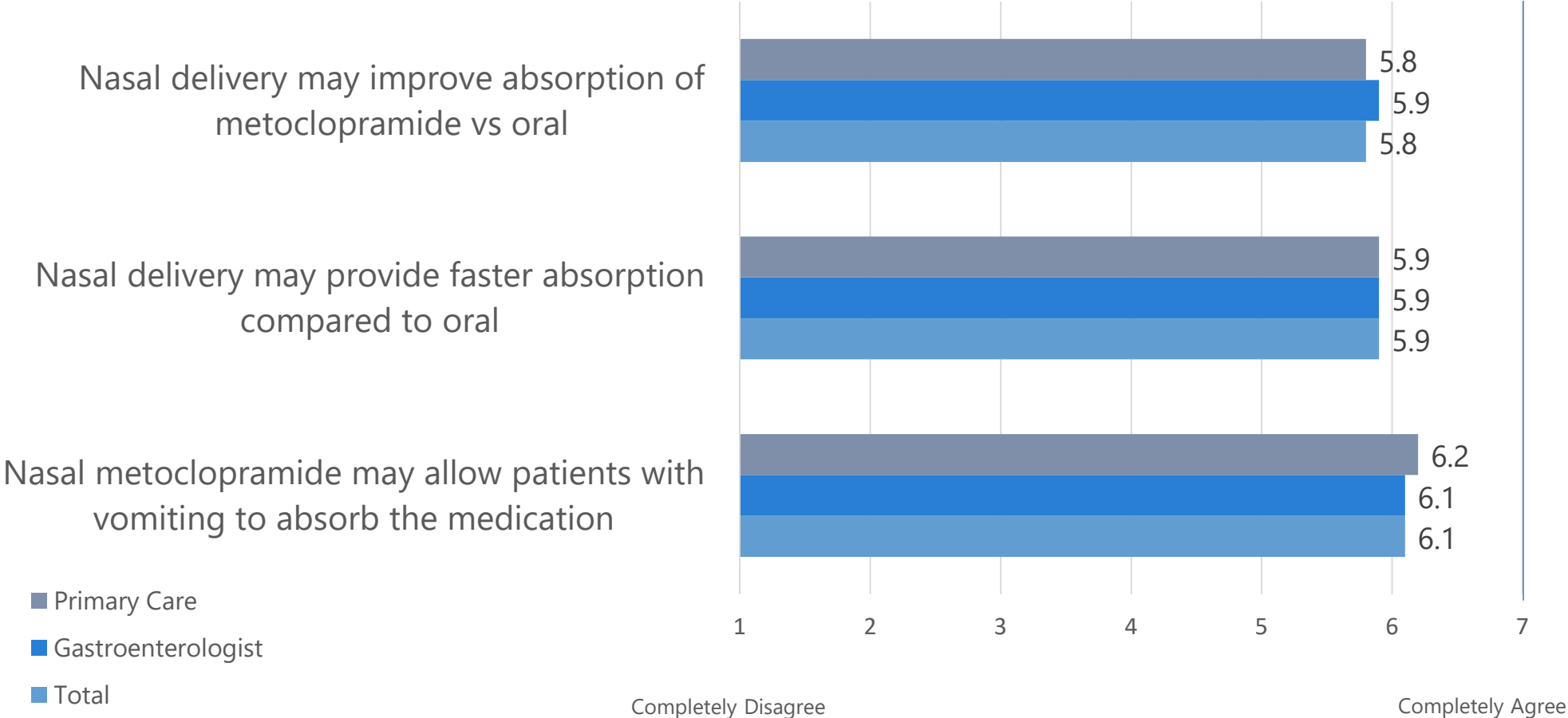


# Commercial Collaboration with EVERSANA



- Partnership provides integrated distribution, sales/marketing and reimbursement services teams to help enable rapid and efficient Gimoti launch, if approved
- Evoke will retain 80%+ of product profits
- Additional \$5M line of credit available to Evoke upon approval of Gimoti NDA

## Mode of Delivery Attributes

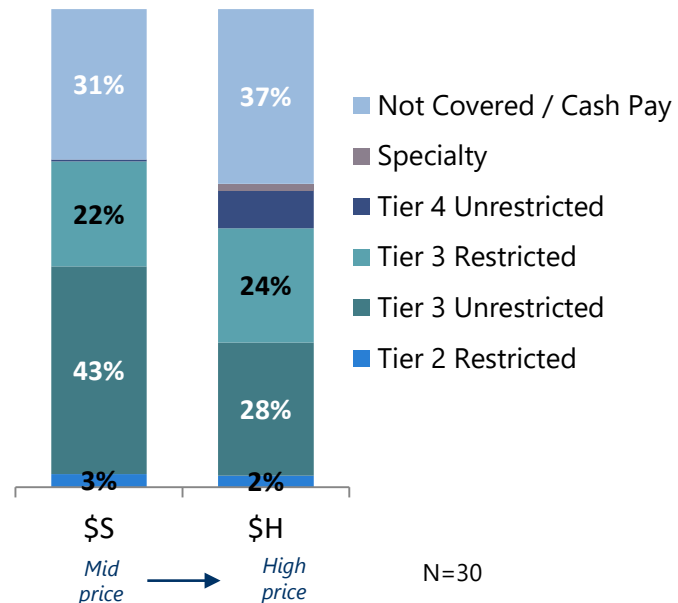


Source: ZS Associates Gastroparesis quantitative survey (n=121), Question 4Q5: How much do you agree with each of the following statements?  
Totals weighted based on average metoclopramide TRx's per high/medium segment

## Anticipate Gimoti to be widely available to commercial plan members

**Management of Gimoti at Evaluated Prices**  
(Coverage by Percentage of Lives)

*Gimoti benefit vs. standard of care*



- Mostly Tier 3 “Unrestricted” or “Restricted” coverage projected (typical for branded products)
  - Typical co-pay for most branded products
  - Little difference in coverage at similar (\$S) or high (\$H) price to current branded GI products
- Similar reimbursement regardless of label differentiation
- Ample commercial insurance reimbursement expected due to:
  - Lack of competitive products
  - Large unmet need
  - Significant current medical costs for hospitalization

Source: Campbell Alliance Web-based surveys with 18 pharmacy directors and 12 medical directors. April 29 through May 26, 2015.



- Current patents provide protection against:
  - Delivering metoclopramide into the nose to treat symptoms associated with gastroparesis; and
  - Using a spectrum of stable liquid formulations containing metoclopramide
- Granted gender specific patents in the European Union and Mexico with coverage until 2032
- 3-years Hatch Waxman data exclusivity upon approval

## U.S. Granted Patents

Patent #	U.S. 6,770,262	U.S. 8,334,281
Title	Nasal Administration of Agents for the Treatment of Gastroparesis	Nasal Formulations of Metoclopramide
Expires	2021	2030

## PCT Applications

Application #	PCT/US2012/052096	U.S. 2017 No. 16/469,092
Title	Treatment of Symptoms Associated with Female Gastroparesis	Treatment of Moderate and Severe Gastroparesis
Expires	2032 (if granted)	2037 (if granted)

# Current Competitive Landscape

Product	Class	Route	Company	Development Status
<b>Gimoti</b>	<b>Dopamine antagonist &amp; mixed 5-HT<sub>3</sub> antagonist/ 5-HT<sub>4</sub> agonist</b>	<b>Nasal</b>	<b>Evoke Pharma</b>	<b>505(b)(2) NDA PDUFA target date June 19, 2020</b> NDA resubmission accepted Jan 2020; Positive comparative exposure PK study results Phase 3 (n=205): Statistical significance achieved in women with moderate to severe gastroparesis symptoms at baseline. Did not meet primary endpoint for ITT.
Relamorelin	Ghrelin agonist	Sub Cutaneous	Allergan	<b>Phase 3 (enrolling)</b> results expected in 2020 Phase 2b results: Failed to meet primary endpoint in symptomatic relief of vomiting reduction. Phase 2a results: Failed to meet secondary symptom endpoint with either dose
Velusetrag	5-HT <sub>4</sub> agonist	Oral	Takeda/ Theravance	<b>Phase 2b (n = 232)</b> Mixed results with three doses (5, 15, and 30 mg). No dose response. More side effects with higher doses. Phase 2a (n=34) results: No results reported for symptom relief
Tradipitant	NK-1 antagonist	Oral	Vanda	<b>Phase 2 (n=141):</b> Met primary endpoint for nausea. January 2019 partial clinical hold.
Renzapride	5-HT <sub>4</sub> agonist and 5HT-3 antagonist	Oral	EndoLogic	<b>Phase 2a (completed 2008):</b> No results reported for symptom relief (gastric emptying only)
NG-101	D2/D3 receptor antagonist	Oral	Neurogastrx	<b>Phase 1:</b> No gastroparesis results

# Experienced Senior Management & Board

**Cam Garner**  
Chairman, Founder

**Dave Gonyer, R.Ph.**  
President, CEO, Founder, Director

**Matt D'Onofrio, MBA**  
Chief Business Officer, Founder

**Marilyn Carlson, D.M.D, M.D., RAC**  
Chief Medical Officer



\$5.7M Cash as of December 31, 2019  
\$5M line of credit available from EVERSANA upon Gimoti approval

## Income Statement Data (in USD)

4Q 2019	(Ended Dec. 31, 2019)
Operating Expenses	
Research & Development	\$0.6M
General Administrative	\$0.8M
Total Operating Expense	\$1.4M
Other (Income) Expense	(\$0.0M)
Net Loss	\$1.4M

## Cash (in USD) and Equity Data

	Dec. 31, 2019
Cash Balance	\$5.7M
Common Shares Outstanding	24.4M
Warrants	2.7M
Stock Options	3.1M

- **Gimoti™:** Novel nasal delivery of metoclopramide for the symptomatic relief of acute and recurrent diabetic gastroparesis in women
- **Serves unmet clinical need:** Provides predictable absorption despite gastroparesis symptoms or stomach emptying status; bypasses the GI tract
- **Large market opportunity:** ~12-16M patients with symptoms (80% women); ~2-3M currently treated in US given limited efficacy from few available treatment options
- **Only one FDA-approved therapy for gastroparesis:** Metoclopramide (oral & IV) still has ~4M million prescriptions of the oral medication prescribed annually
- **Positive data from pivotal comparative exposure PK study:** Gimoti demonstrated AUC equivalence
- **Gimoti NDA PDUFA target date set for June 19, 2020**